

---

# What Are Contributions To My Local A.A. District Used For?

*Contributions made to your local A.A. District may be used for any of the following:*

- District service workshops or fun district events (e.g. renting a venue, purchasing food) such as ice cream socials, sober picnics, old timers meeting, safety in A.A. workshops, staying sober through the holidays workshops, 11th Step / meditation workshops, and more
- Printing costs for flyers General Service Representatives (G.S.R.s) can distribute to their groups announcing A.A. events or local service opportunities
- Buying literature distributed by district committees helping the still suffering alcoholic such as the Bridging the Gap, Cooperating with the Professional Community (C.P.C.), and Public Information (P.I.) committees
- Reimbursing your local District Committee Member (D.C.M.) in attending relevant A.A. General Service conventions, assemblies, forums and workshops (travel costs, food, and lodging) in order to better serve local groups
- Buying Alcoholics Anonymous conference approved literature G.S.R.'s can distribute to your group
- Rent for district meeting spaces
- Maintaining the district website where local A.A. events are announced and where local service opportunities or 12th step opportunities are posted

To learn more about which District represents your group, or how to contribute to your local A.A. District, please visit <http://www.area13aa.org/districtsdistricts.html>

---

**YOUR LOCAL A.A. DISTRICT: District [ ] of Area 13 of Alcoholics Anonymous.**

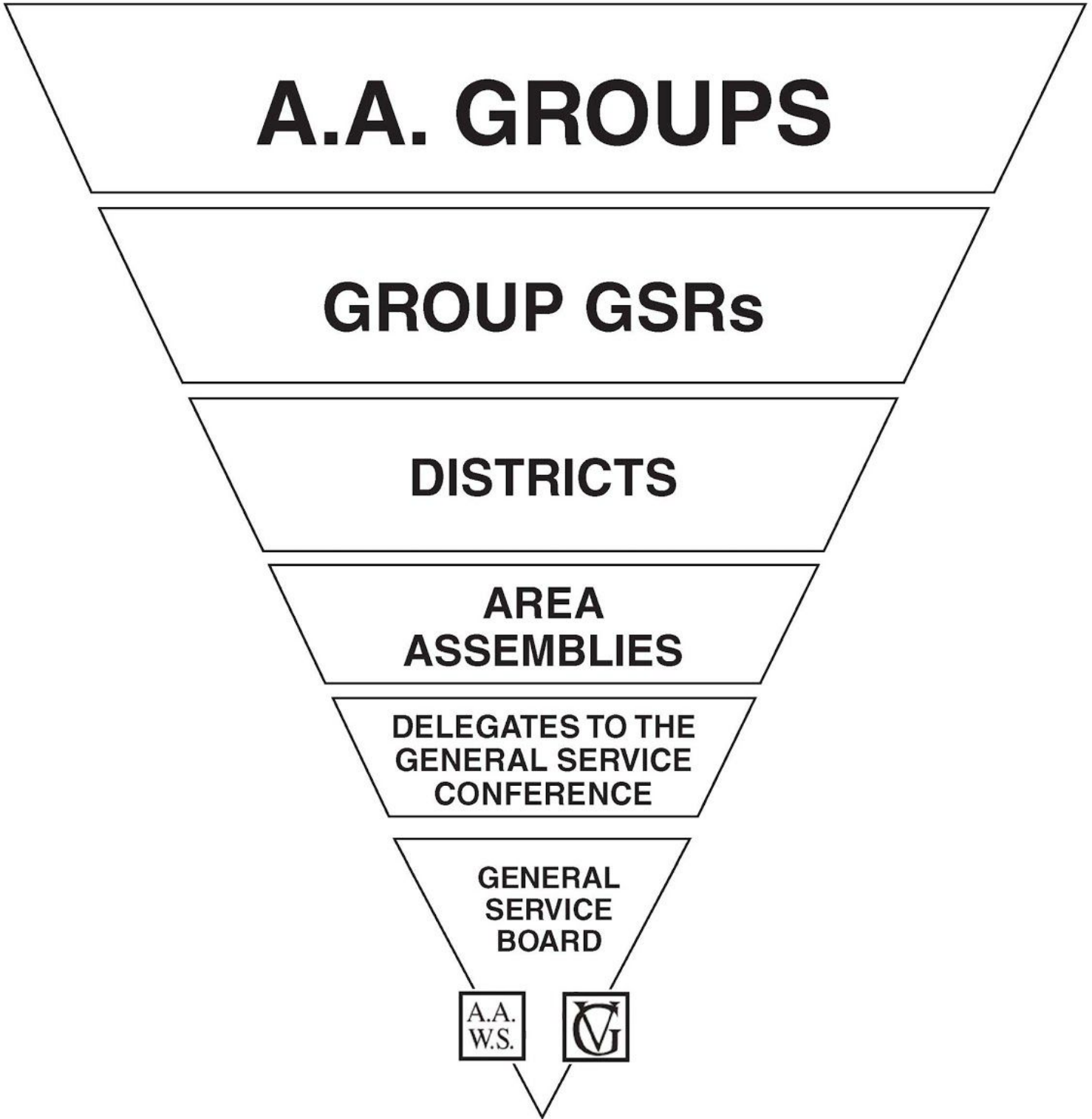
District [ ] serves and represents groups in the following zip codes: *list zip codes here*

**Individual or group contributions can be made via the following:**

- **To contribute by debit card or credit card** visit *insert URL here*
- **To contribute via PayPal** visit *insert URL here*
- **To contribute using Venmo** contribute to *insert @Venmo Account Name here*
- **To contribute by check** please make checks payable to "*District [ ]*" and provide your name, email, and group name (if contributing on behalf of your group) and mail to:

*Your District PO BOX Info Goes Here*

For more information or to get your group involved in General Service contact your *District Number* - District Committee Member at *insert DCM area email address here* or visit *Your District Website Goes Here*



For more information or to get your group involved in General Service contact your **District Number** - District Committee Member at insert **DCM area email address here** or visit **Your District Website Goes Here**